

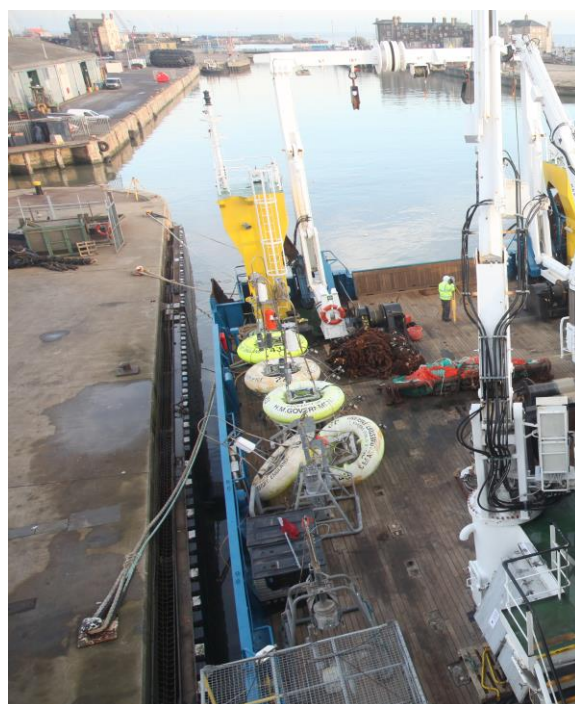


## RV Cefas Endeavour

RV Cefas Endeavour is a multi-disciplinary research and survey vessel which is owned by Cefas.

With a home port close to the Cefas laboratory in Lowestoft, RV Cefas Endeavour was built to exacting standards, optimising safety and minimising environmental impact.

The vessel provides an effective and economic platform for scientific research and commercial surveys in support of projects from a range of industry sectors including renewable energy, oil and gas, and telecommunications.



## General

Name	- <i>Cefas Endeavour</i>
Owner	- <i>Cefas</i>
Manager	- <i>Cefas</i>
Operator	- <i>AW Ship Management</i>
Builder	- <i>Ferguson Shipbuilders Ltd, Glasgow</i>
Year Built	- <i>2003</i>
Type	- <i>Research Vessel</i>
Classification	- <i>100A1 ICE CLASS 1D, ICC, LMC, IP, UMS, CCS, DP(CM), Propulsion Drives in tandem, SCM, Multipurpose Research Vessel</i>
Port of Registration	- <i>Lowestoft, UK</i>
Flag	- <i>British</i>
IMO No.	- <i>9251107</i>
MMSI	- <i>235005270</i>
Call Sign	- <i>VQHF3</i>

## Accommodation

Berths	- <i>35 Total</i>
Owner	- <i>18 Cabins</i>
Charterers	- <i>15 Cabins</i>
	- <i>2 x Twin en-suite</i>
	- <i>13 x Single en-suite</i>

## Fuel & Consumption

Fuel	- <i>Marine Gas Oil</i>
In Port	- <i>1.0 tonne per day *</i>
Transit Speed	- <i>up to 8.0 tonnes per day *</i>
Survey Speed	- <i>up to 6.0 tonnes per day *</i>

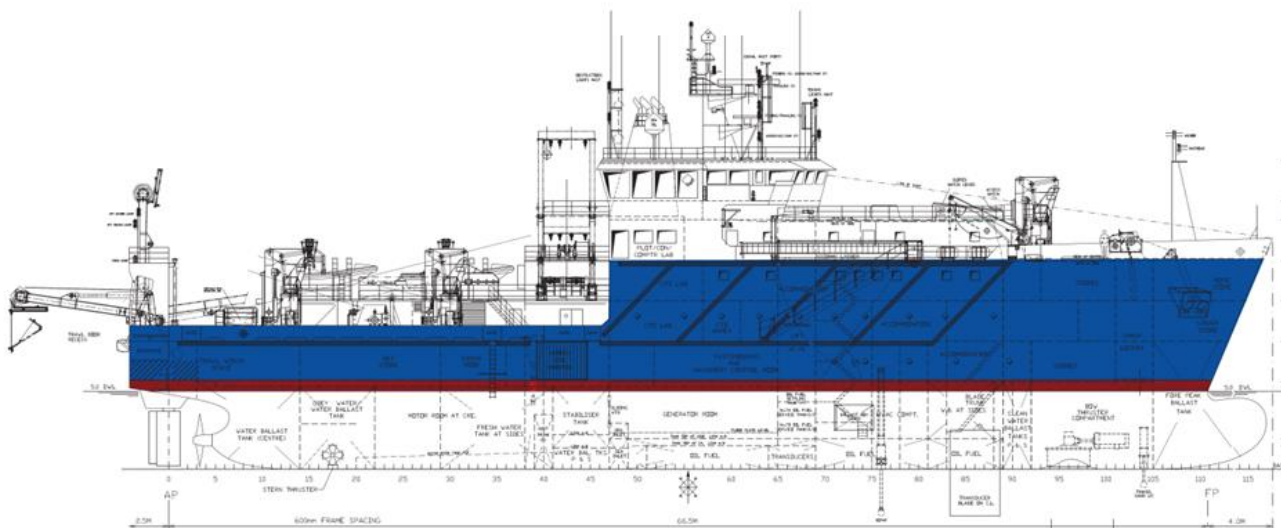
\* fuel consumption rates are indicative only and dependant upon engine use

## Main Characteristics

Length OA/PB	- <i>73.92m/67.30m</i>
Beam	- <i>16.11m/15.80m</i>
OA/Moulded	
Depth Moulded	- <i>8.20m</i>
Draft at	- <i>5.50m/5.00m</i>
Sea/Harbour	
Draft (with blade deployed) at	- <i>8.75m/9.25m</i>
Sea/Harbour	
Gross/Net	- <i>2983T/894T</i>
Tonnage	
Speed Max.	- <i>13.6 knots</i>
Speed Service	- <i>10.5 knots</i>
Speed	- <i>10.0 knots</i>
Economical	
Endurance	- <i>30 Days</i>
Deck Space	- <i>310m<sup>2</sup></i>

## Main Equipment

Main Engines	- <i>3 x Wärtsilä 6L20, 1000kW / 660v 50Hz 3-ph</i>
	- <i>1 x Cummins N14, 250 kVA / 415v 50Hz 3-ph</i>
DC Drives	- <i>2 x Ansaldo electric motors (each 1150kW, 0-150 rpm) 729v ripple DC</i>
Propulsion Power	- <i>2300 kW</i>
Bow Thrusters	- <i>820kW Schottel pump-jet, omni-directional</i>
Stern Thrusters	- <i>380kW Brunvoll tunnel, CP</i>
Bollard Pull	- <i>29 tonnes</i>
Electrical Systems	- <i>415v 3ph 225A / 240v 1ph 120A 50Hz</i>





## Deck Equipment

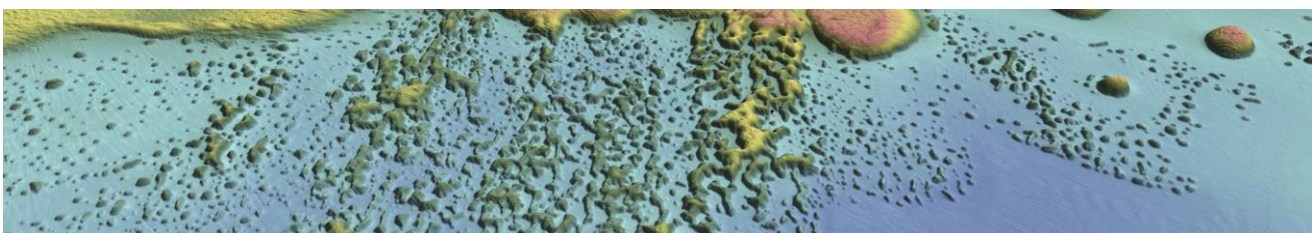
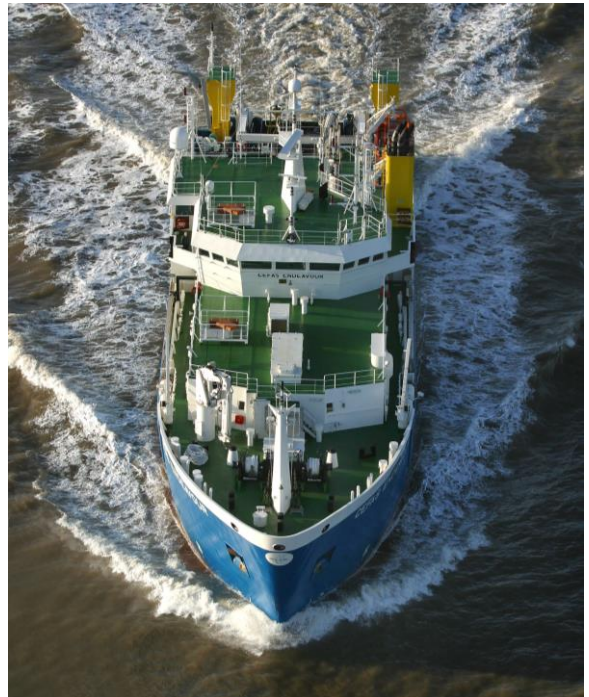
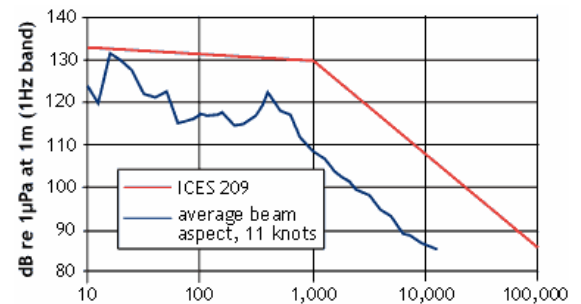
Side Gantry	- 7.5 tonne articulated side A-frame
Stern Gantry	- 25 tonne stern A-frame
Winches	- 2 x trawl winches - 2 x drum winches (1 x double) - Double barrel survey winch with motion compensation and slip rings - Double barrel survey winch with slip rings (with a four pass SM fibre capability) - Double barrel towing winch with slip rings (with a four pass SM fibre capability) - Side scan sonar winch with slip rings - 3 x Gilson winches (one fitted to stern A-frame)
Cranes	- 3 x 35 tM cranes
Boats	- 2 x 8m rigid work and rescue boats with suite of navigational equipment deployed on heave-compensated davits

## Other

Communications	- In port BT Tel. - Cellphone - Voice/Fax/Data - Radio TELEX - Iridium voice communications - VSAT Satcom/Internet system - HUBBAX cellphone data transfer system
Special Features	- Interling anti-roll system - Local Area Network with scientific data management system and fibre backbone - Ship-wide general information system

## Underwater Radiated Noise Profile

During the vessels last noise profile check (2003), the following provides the average beam aspect radiated noise at 11 knots.



## Survey Equipment

Navigation & Positioning	<ul style="list-style-type: none"> <li>- Seapath 330 MRU and positioning</li> <li>- Fugro SeaStar Corrections</li> <li>- CNAV 3050 with PPP corrections</li> <li>- AIS with logging capability</li> <li>- HiPAP 501 underwater positioning sonar</li> </ul>
Chart Plotters	<ul style="list-style-type: none"> <li>- Transas Navisailor 4000</li> <li>- Soden system</li> </ul>
Hydrographic Equipment	<ul style="list-style-type: none"> <li>- Kongsberg EM2040 MBES (0.4° x 1°)</li> <li>- EA600 SBES (12 / 50 / 200)</li> <li>- Olex seabed display/logging system (multibeam option)</li> </ul>
Oceanographic Equipment	<ul style="list-style-type: none"> <li>- RDI workhorse 600kHz ADCP (with bottom tracking)</li> </ul>
Fisheries Acoustic Equipment	<ul style="list-style-type: none"> <li>- EK60 38 / 120 / 200 scientific sounder</li> <li>- SH80 high-frequency omni-directional sonar (scientific option)</li> <li>- Hull-mounted Scanmar and Marport fishing net mensuration computer + transducers</li> </ul>
Environmental Sampling	<ul style="list-style-type: none"> <li>- Day Grab</li> <li>- NIOZ Corer</li> <li>- Hamon Grab</li> <li>- Shipek Grab</li> <li>- Fibre Optic HD Camera System (3,000m)</li> <li>- SBE-911 plus profiling CTD</li> <li>- SBE-32 Carousel Water Sampler (12 x 10l bottles)</li> </ul>
Transducers / Sea Tube	<ul style="list-style-type: none"> <li>- Drop keel to deploy transducers outside the hull boundary layer in addition to hull mounted transducers</li> <li>- 1.2 m diameter sea tube/moon-pool</li> </ul>
Water Quality	<ul style="list-style-type: none"> <li>- FerryBox</li> </ul>

## Survey Facilities

Survey Room	- 1 x survey room with networked workstations
Laboratories	- 1 x wet work laboratory
	- 3 x dry work laboratories
Additional Lab Solutions	- 5 x serviced deck locations for containerised laboratories

## Enquiries

In addition to its obligations to the UK Government, RV Cefas Endeavour is also available for international commercial sector operations and third party charter.

For further information on RV Cefas Endeavour's specifications, or the vessel's current survey programme, please contact James Parker or Marc Whybrow on +44 (0) 1502 562244 or [rvenquiries@cefass.co.uk](mailto:rvenquiries@cefass.co.uk).



**SCIENCE IS GREAT**  
BRITAIN & NORTHERN IRELAND

Cefas is a world leader in marine science and technology, providing innovative solutions for the aquatic environment, biodiversity and food security. For world-class expertise, choose the UK.

RV Cefas Endeavour  
Cefas

[www.great.gov.uk](http://www.great.gov.uk)